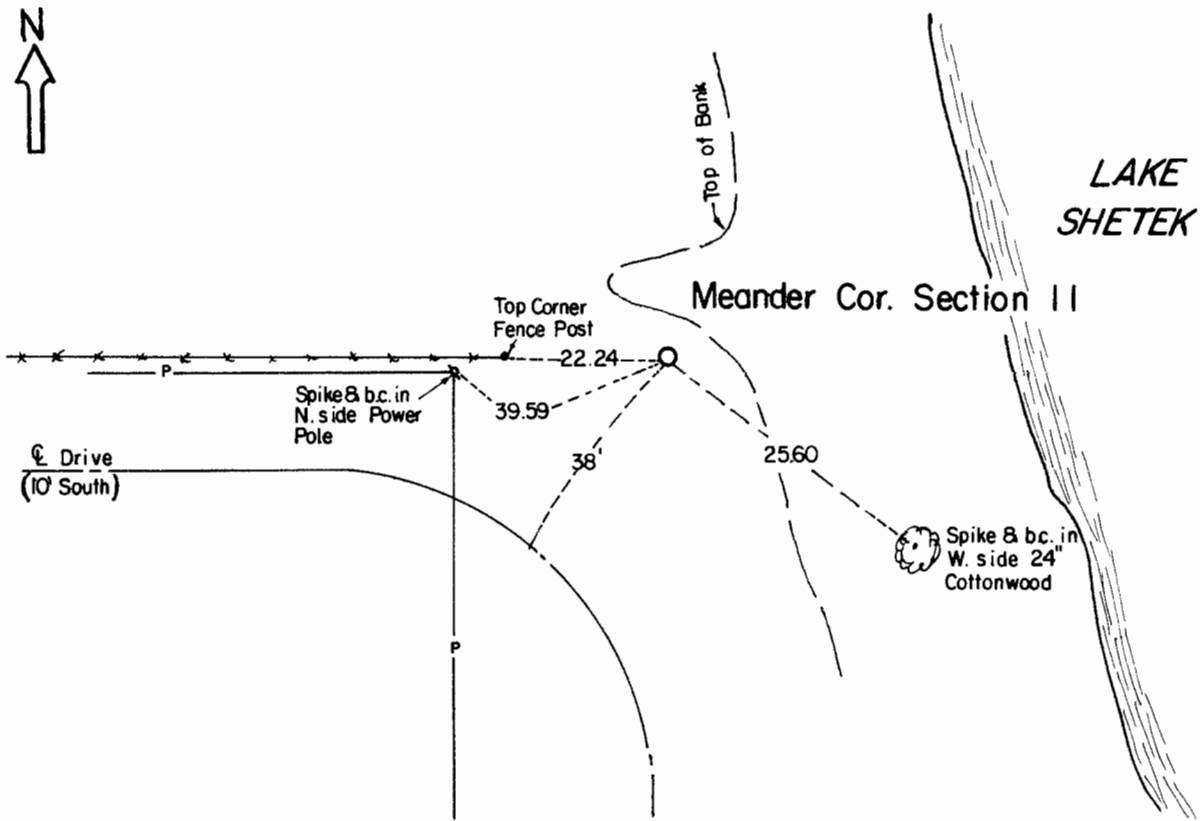


CERTIFICATE OF LOCATION OF GOVERNMENT CORNER

Meander (North line) Corner of Section **11** , Township **107** , Range **41** 5th P.M.
STATE OF MINNESOTA, County of Murray.

Statement: Sept. 13, 1989 - Found a wooden fence and several small stones. Placed a Minnesota Department of Transportation Cast Iron Monument.

SKETCH OF REFERENCE TIES



Statement of evidence relative to this corner location is on the back of page.

I hereby certify that this document and the data contained herein was prepared by me or under my direct supervision and that I am a duly Registered Land Surveyor under the laws of the State of Minnesota.

Duane A. Bonnema *Nov 4, 1989*
Duane A. Bonnema Date

Minnesota Registration No. 14895

OFFICE OF THE COUNTY RECORDER
COUNTY OF MURRAY NOV 15 1989

I hereby certify that this document was filed in the County Recorder's office at ___ M. on the ___ day of ___ A.D., 19__

County Recorder *James K. Johnson*

By _____, Deputy
DOCUMENT NO. _____

Meander (North line) Cor. Sec. 11 T107N-R41W

Statement:

- August 1861 Original Government Land Office Surveyor L. G. M. Fletcher records in his field notes, "set post the corner of fractional Secs. 2 and 11, built mound of stone."*
- May 14, 1901 J. W. Woolstencroft, County Surveyor, records in the County Surveyor's Record Book that he measured a distance of 2645 between the South 1/4 Corner of Section 2 and the shore of Lake Shetek.*
- Sept. 13, 1989 Duane A. Bonnema, LS Reg. No. 14895, found a wooden fence post at the top of the bank along the lake. The wooden fence post had rotted off and was laying down. At least a dozen small limestones were found lying South of the base of the rotted fence post. The small limestones were "stacked" atop each other. This meander corner position, according to government measure, should be exactly 1 chain East, however this lands in the lake. Is it possible that the top of the bank has moved 66 feet West since 1861? According to the 1901 Woolstencroft measurement, the shoreline has not changed since 1901. It is possible that Fletcher made a 1 chain blunder in 1861. A good strong barbed wire fence runs from the North 1/4 corner of Section 11 East to Lake Shetek. A Minnesota Department of Transportation Cast Iron Monument was placed at the fence corner and limestone pile location described above; as this seems to be the best available evidence of the meander corner position.*